

IL-RAM1

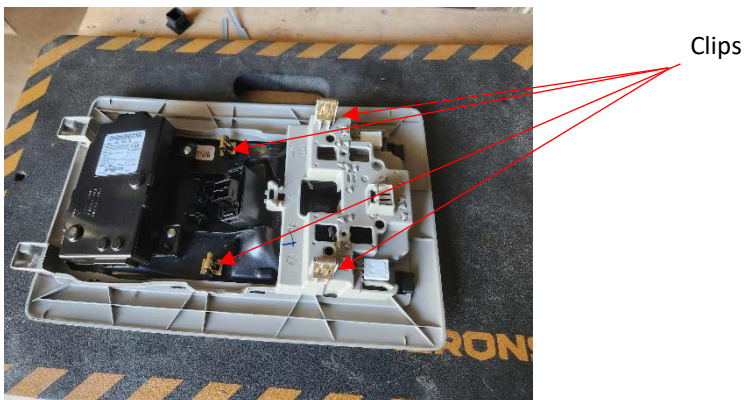


Specifications:

The IL-RAM1 is an interior light upgrade kit for the roof mounted console specifically designed for the Ram 2500 but will fit other models with the same roof console.

Installation:

1. Remove the roof mounted console. There are 4 clips holding the roof mounted console into the vehicle. These pull directly down to remove the console. Do not pull the front of the panel down as the front of the console is hooked above the headliner so must be slid backward to remove once the clips have been released. Start at the back of the panel (towards the rear of the vehicle) and pry down the console. It can help to use a long flat head screwdriver or similar to wedge between the clip and the support to help release the metal clips from the housing as they can be quite tight. Unclip all plugs and remove the console from the vehicle



2. Once the panel is removed, Split the black section from the cream section. There are 2 tabs at the front of the panel (front windscreen side) once pushed in the black panel will drop down at the front and unhook at the back



IL-RAM1



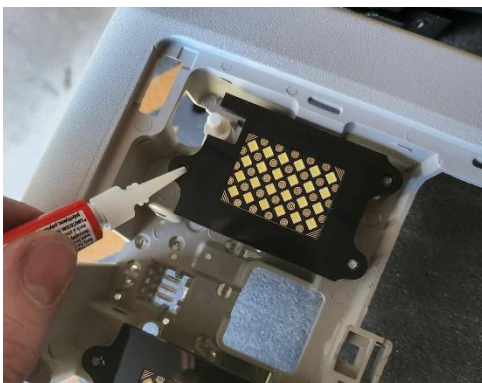
3. There are 3 hot melted points per lighting panel that hold the factory reflector and lighting piece to the console. Use a soldering iron or blade or Dremel to remove the heads of these "rivets" to allow the factory reflectors to be removed



4. Insert the plug with the positive (red) lead facing the front of the vehicle (towards the hooks on the cream panel) plug in both lighting assemblies and take the panel to the vehicle to test. If the lights don't work turn the connector around and re-test. If you still have no lighting and have tested the switches as well then check to make sure the wires on the plug are contacting the contacts on the panel. Sometimes you will need to make sure the wire goes around the end of the plug not just the side of it to make sure it contacts the terminals



5. Once tested, Mount the new led panel over the mounting points and use the glue supplied to glue the 3 mounting points down. Repeat this on the other led panel.



IL-RAM1



6. Assemble the black housing back together with the cream housing.



7. Plug back into the vehicle and test before finally clipping the panel in.
8. Enjoy your new bright interior lighting!

